

**GVT / PGVT**  
**1200x1800 mm**



# EXTENDED &

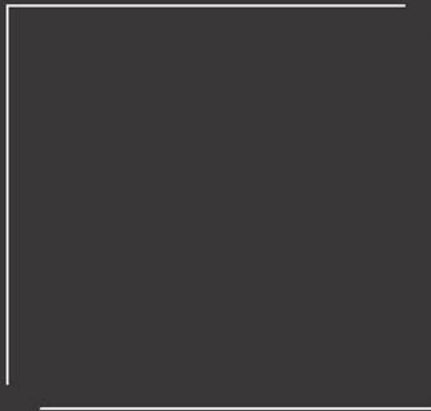
# EXTRA SPACE

CLASSIC, MODERN  
AND CHICK:  
A COLLECTION THAT  
MEETS THE NEEDS  
OF DESIGN.

THINQ SLAB is a combination of versatility, technical and aesthetic performance a result of the most advanced production technologies. THINQ SLAB brings out the new concept of continuous surfaces and are designed for any type of application.



**1200x1800 mm**  
120x180 cm



# Slab format



*Taking into account the new demands of the world of architecture and interior design, Our launches new formats of slim slab marble tiles in large dimensions with the additions of 1200x1200mm expanding its range of technical solutions & innovation for better lifestyle.*

# THINO SLAB

EVOLUTION OF THE TILES

**120x180 cm**

POLISHED GLAZED VITRIFIED TILES /  
GLAZED VITRIFIED TILES

## AVAILABLE SIZES:



# Technical Features

---

The significant life events of this tile collection flawlessly support today's modern lifestyle, with qualities such as scratch resistance, germ resistance, stain resistance, and more.



Scratch  
Resistance



Fire  
Resistance



Frost  
Resistance



Stain  
Resistance



Dimensional  
Stability



Germ  
Resistance



Chemical  
Resistance



Water  
Resistance

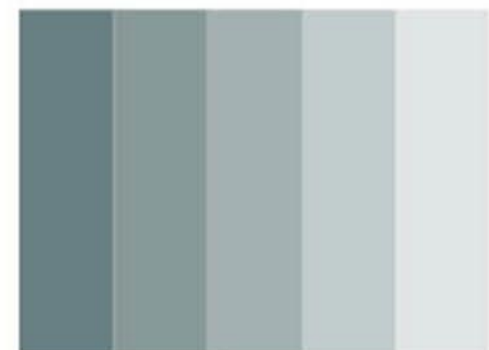


# AMAZONITE

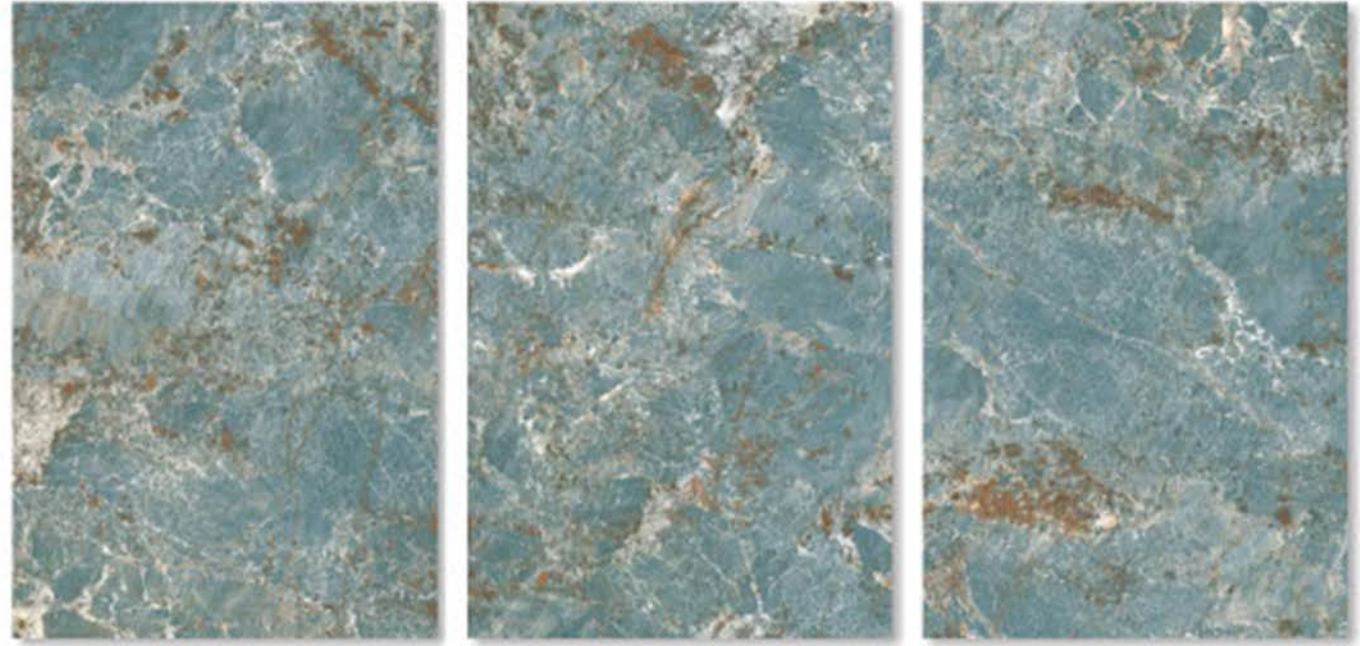


**High Glossy**  
Finish

**1200x**  
**1800mm**



Elegant Tiles for  
**Elegant Space**



**EMPRESS  
BLACK**



  
**High Glossy**  
Finish

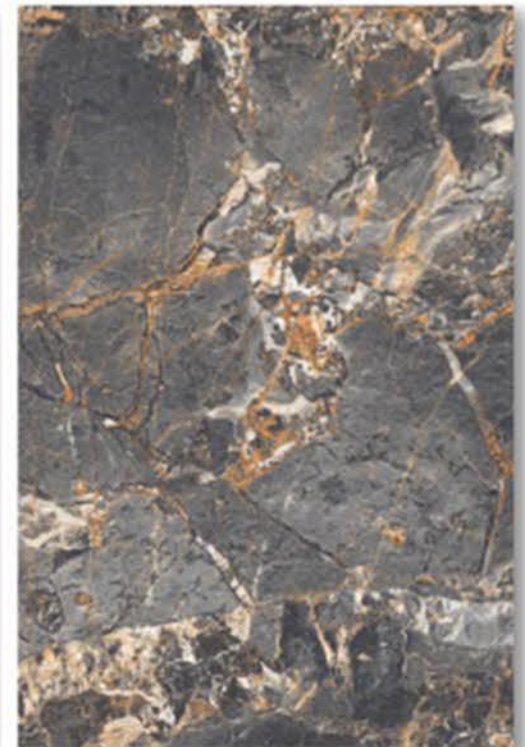
**1200x**  
**1800mm**



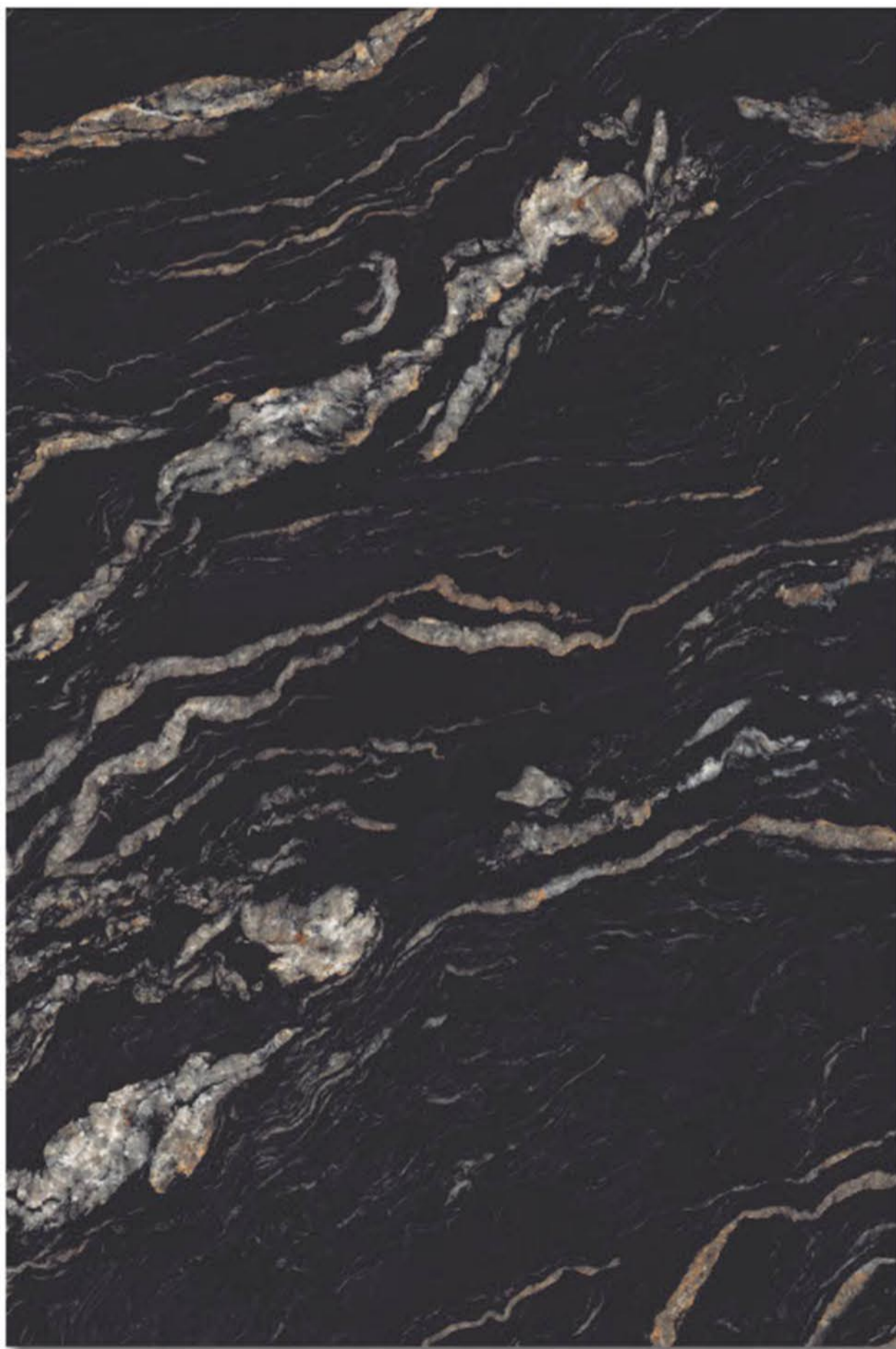




Elegant Tiles for  
**Elegant Space**

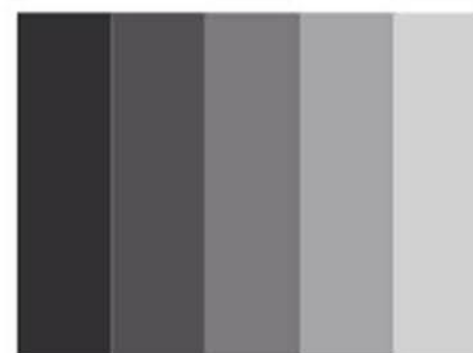


# GRANA PORTORO



**High Glossy**  
Finish

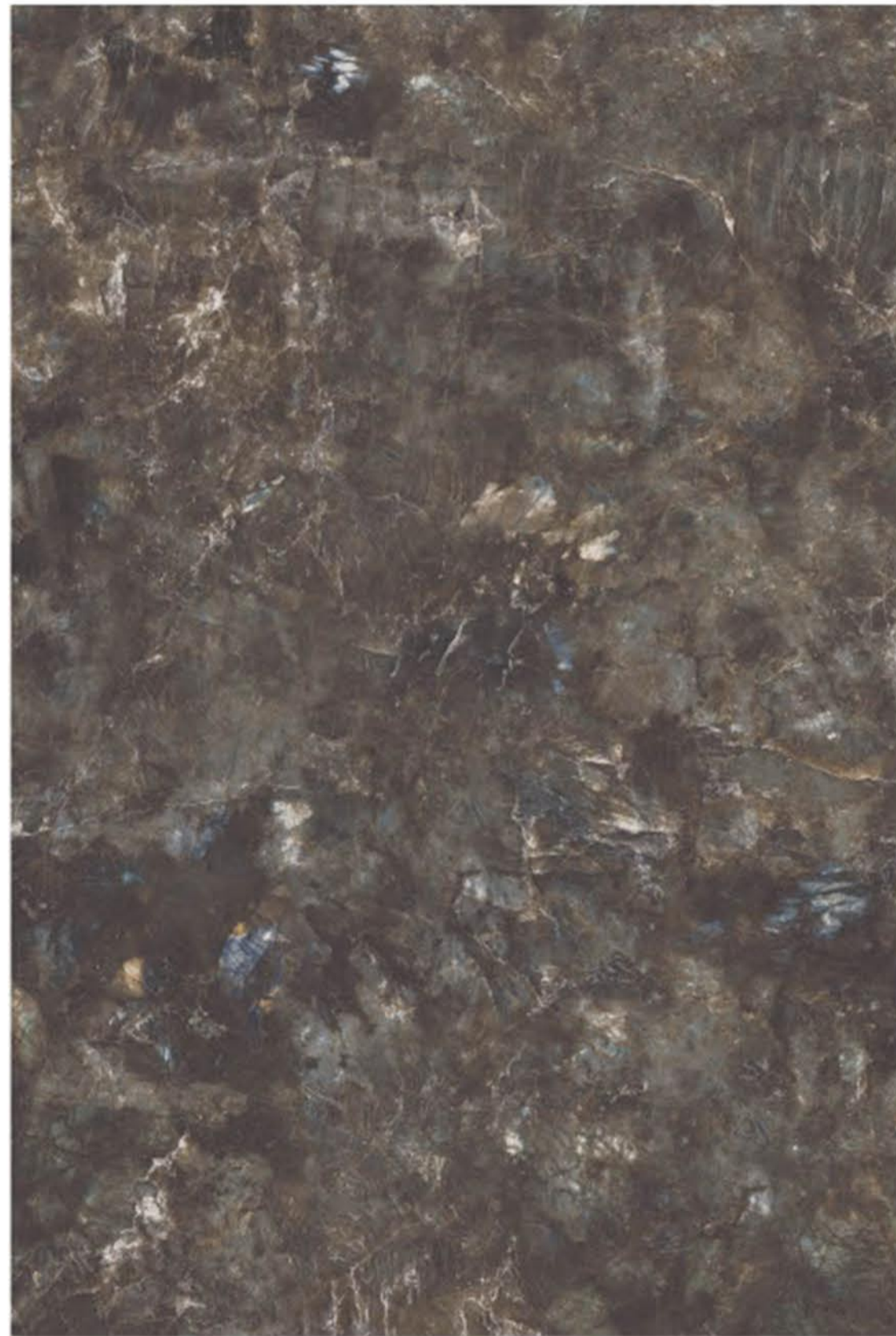
**1200x**  
**1800mm**



Elegant Tiles for  
**Elegant Space**



**ULTRON  
WALLNUT**

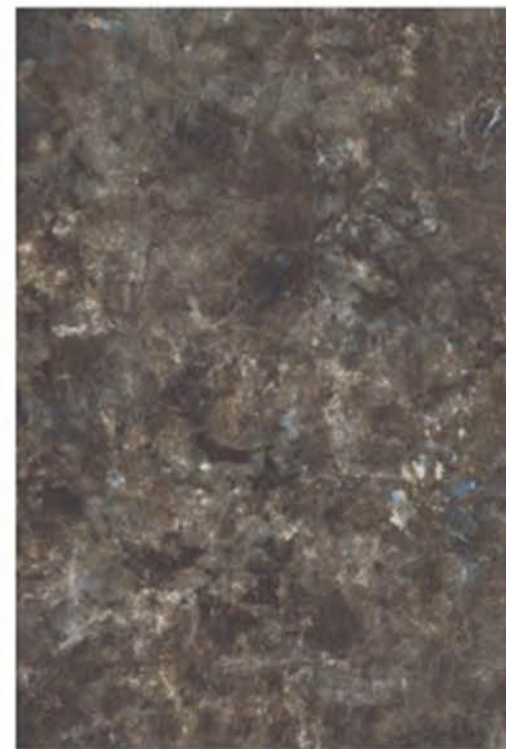


  
**High Glossy**  
Finish

**1200x**  
**1800mm**



Elegant Tiles for  
**Elegant Space**



# Technical Specification

CHARACTERISTIC	INTERNATIONAL STANDARD ISO13006:2012/EN14411 Group BIa	MEAN VALUE	TEST METHOD
<b>Dimension &amp; Surface Quality</b>			
length	± 0.60 %	± 0.10 %	ISO 10545-2
Thickness	± 5.00 %	± 3.00 %	ISO 10545-2
Straightness in side	± 0.50 %	± 0.10 %	ISO 10545-2
Rectangularity	± 0.50 %	± 0.10 %	ISO 10545-2
Surface flatness	± 0.50 %	± 0.510 %	ISO 10545-2
Surface quality	Declared by Manu.	95~105 %	ISO 2813(Gloss Meter)
Glossiness (only Polished Products)	Min. 95% Tile Should Be Free From Defects	Min. 98% Tile Should Be Free From Defects	ISO 10545-2
<b>Physical Characteristics</b>			
Water absorption	$E \leq 0.5 \%$	$E \leq 0.5 \%$	ISO 10545-3
MOH'S hardness	$\leq 6$	$\leq 6$	ISO 10545-3
Moisture expansion	Nil	Nil	ISO 10545-10
Abrasion resistance	Declared by Manu.	Pei 3~5 (Declared on product)	ISO 10545-7
<b>Mechanical Characteristics</b>			
Flexural strength(MOR)	$\geq 35\text{N/mm}^2$ (350kg/cm <sup>2</sup> )	$\geq 37\text{N/mm}^2$ (370kg/cm <sup>2</sup> )	ISO 10545-4
Breaking strength	1300 Newton	2000 Newton	ISO 10545-4
Impact resistance	Declared by Manu.	No indentation or cracking	ISO 10545-5
<b>Safety Characteristics</b>			
Skid resistance(Dynamic Friction Coefficient)	$\geq 0.4$	$\geq 0.4$	ISO 10545-17
Density	$\geq 2.0 \text{ gm/cc}$	$\geq 2.3 \text{ gm/cc}$	DIN 51082
<b>Thermo Photo Characteristics</b>			
Thermal shock resistance	Resistant to 10 cycles	Pass Min. 10 cycles	ISO 10545-9
Frost resistance	Frost Proof	Need to comply with the standard	ISO 10545-12
Coefficient of Linear thermal Expansion	$9 \times 10^{-4} \text{ K}^{-1}$	$< 5.86 \times 10^{-4} \text{ K}^{-1}$	ISO 10545-8
Color resistance to UV light	Resistant	Resistant	ISO 10545-16
<b>Chemical Characteristics</b>			
Chemical resistance: House Hold Chemicals & Swimming Pool Salts	Min. Class - GB	Confirm to Classes - GA	ISO 10545-13
Chemical resistance: Low Concentrations Acids & Alkalis	Min. Class - GIB	Confirm to Classes - GIA	ISO 10545-13
Chemical resistance: High Concentrations Acids & Alkalis	Min. Class - GHB	Confirm to Classes - GHA	ISO 10545-13
Stain resistance	Min. Class - 3	Min. Confirm to Class - 4	ISO 10545-14

# Packing Details

DIMENSION(MM)	<b>1200x1800mm</b>
SLAB / BOX	<b>2 pc</b>
COVERAGE AREA / BOX	<b>4.32 sq. mtr.</b>
WEIGHT / BOX (APPROX)	<b>90 kg</b>



Elegant Tiles for  
**Elegant Space**



**AAJVETO MANUFACTURING PVT. LTD.**

Lakhadhirnagar, navagam road, morbi - 363 641, (Gujarat) INDIA.  
info@ajvetoceramic.com | www.ajvetoceramic.com